

UNIT 3 : NEPALESE ECONOMY

- Economy of Nepal
- Planned and Mixed Economy
- Nepal's status in HDI
- World Development
- Poverty status

Planned Economy: Type of economy that gives the government total control over the allocation of resources. A planned economy alleviates the use of private enterprises and allows the government to determine everything from distribution to pricing. Planned economies basically give the government dictatorship type control over the resources of the country. Planned economies can provide stability, but also can limit the growth and advancement of the country if the government does not allocate resources to the innovative enterprises.

National Planning Commission:

The National Planning Commission (NPC) is the apex advisory body of the Government of Nepal for formulating a national vision, periodic plans and policies for development. It is headed by the Right Honorable Prime Minister. The NPC assesses resource needs, identifies sources of funding, and allocates budget for socio-economic development. It serves as a central agency for monitoring and evaluating development plans, policies and programs.

Planned Economy in Nepal:

Nepal started the planned development activities from 2013 BS(1956) by 2064 10th Five years Periodic plans were over. The 11th Five years plan could not be implemented due to the political reversal in the nation. Consequently, an ad- hoc plan called Three Years Interim Plan was executed in 2064 as continuation of 11th plan. After it got over in 2066/067, the 12th Three Years Plan was implemented. Now the nation is running under the 13th Three Years Plan executed from the fiscal year 2070. It has kept a long term aim to make Nepal a prosperous nation.

The objectives of the 13th plan was :

To make people realize the direct change in their level of living by reducing existing economic and human poverty in the country.

First Five-Year Plan

The First Five-Year Plan (1956–61) allocated about Rs576 million for development expenditures. Transportation and communications received top priority with over 36 percent of the budget allocations. Agriculture, including village development and irrigation, took second priority with about 20 percent of budget expenditures. The plan, which also focused on collecting statistics, was not well conceived, however, and resulted in actual expenditures of about Rs382.9 million—two-thirds the budgeted amount. In most cases, targets were missed by a wide margin. For example, although approximately 1,450 kilometers of highways were targeted for construction, only about 565 kilometers were built.

Mixed Economy:

- both the private enterprise and a degree of state monopoly (usually in public services, defense, infrastructure, and basic industries) coexist.
- All modern economies are mixed where the means of production are shared between the private and public sectors. Also called dual economy.

Features

- Resources are owned both by the government as well as private individuals. i.e. co-existence of both public sector and private sector.
- Market forces prevail but are closely monitored by the government.

Advantages

- Producers and consumer have sovereignty to choose what to produce and what to consume but production and consumption of harmful goods and services may be stopped by the government.
 - Social cost of business activities may be reduced by carrying out cost-benefit analysis by the government.
 - As compared to Market economy, a mixed economy may have less income inequality due to the role played by the government.
 - Monopolies may be existing but under close supervision of the government.
-
-

Nepal Status in HDI

What is human development?

Human development is defined as the process of enlarging people's freedoms and opportunities and improving their well-being. Human development is about the real freedom ordinary people have to

decide who to be, what to do, and how to live. The human development concept was developed by economist Mahbub ul Haq.

What is Human Development Index (HDI)?

The **Human Development Index (HDI)** is a composite statistic of life expectancy, education, and income per capita indicators, which are used to rank countries into four tiers of **human development**.

Nepal's Status in HDI

- Nepal's performance in human development measures faltered in 2014, as the country fell one spot to 146th position in the latest Human Development Index (HDI) report on account of rise in life expectancy and per capita income.
- Nepal ranked 146 among 188 countries in Human Development Report 2015 released on Monday by the United Nations Development Programme (UNDP).
- With a score of 0.548, Nepal is in the low human development category, among the 188 countries, the report revealed, suggesting Nepal to increase investment in agriculture, industry and infrastructure to bridge the widening gap between rural and urban population.
- "Kathmandu has \$2,764 per capita income on the basis of Purchasing Power Parity (PPP) compared to national average of \$1,160," the report states.
- As usual Kathmandu ranks highest in the human development with a score of 0.632, followed by Lalitpur, Kaski, Bhaktapur and Manang districts, whereas Mugu, Bajhang, Kalikot, Humla and Achham districts have the lowest human development, according to the report.
- Norway topped the list followed by Australia and Switzerland. In South Asia, India, Sri Lanka and Bangladesh are above Nepal, whereas Pakistan and Afghanistan are below Nepal. The HDI rank of Bangladesh and Pakistan is 142 and 147, respectively. India ranked lowest among the BRICS nations.
- The HDI is an average measure of basic human development achievements in a country. It is a summary measure for assessing long-term progress in three basic dimensions of human development a long and healthy life, access to knowledge and a decent standard of living.
- The 2015 Human Development Report (HDR) Work for Human Development examines the intrinsic relationship between work and human development, according to UNDP.
- Work, which is a broader concept than jobs or employment, can be a means of contributing to the public good, reducing inequality, securing livelihoods and empowering individuals, the report said.
- "Work allows people to participate in the society and provides them a sense of dignity and worth.

- In addition, work that involves caring for others or voluntarism builds social cohesion and strengthens bonds within families and communities," the report said.

What is poverty?

Poverty is about not having enough money to meet basic needs including food, clothing and shelter. However, poverty is more, much more than just not having enough money.

The World Bank Organization describes poverty in this way:

“Poverty is hunger. Poverty is lack of shelter. Poverty is being sick and not being able to see a doctor. Poverty is not having access to school and not knowing how to read. Poverty is not having a job, is fear for the future, living one day at a time.

Poverty has many faces, changing from place to place and across time, and has been described in many ways. Most often, poverty is a situation people want to escape. So poverty is a call to action -- for the poor and the wealthy alike -- a call to change the world so that many more may have enough to eat, adequate shelter, access to education and health, protection from violence, and a voice in what happens in their communities.”

Despite some progress in poverty reduction in recent years, Nepal remains one of the poorest countries in the world, with a Human Development Index of 0.463, placing it 157th out of 187 countries listed in the United Nations Development Programme's Human Development Report 2013.

Poverty in Nepal

- Over 30 per cent of Nepalese live on less than US\$14 per person, per month, according to the national living standards survey conducted in 2010-2011. While the overall poverty rate for Nepal is 25 per cent, this figure increases to 45 per cent in the Mid-Western region and 46 per cent in the Far-Western region. In these remote hill and mountain zones, the terrain is rugged, rainfall is low and the poor-quality soil is difficult to farm. Agricultural holdings per household are the smallest in the country.
- About 80 per cent of Nepal's people live in rural areas and depend on subsistence farming for their livelihoods. Household food insecurity and poor nutrition are major concerns in these areas, where about half of children under five years of age are undernourished. Most rural households have little or no access to primary health care, education, safe drinking water, sanitation or other basic services.
- Poor rural people in Nepal generally have large families, very small landholdings or none at all, and high rates of illiteracy. They are also concentrated in specific ethnic, caste and marginalized groups, particularly those of the lowest caste (dalits), indigenous peoples (janajatis) and women.

Population density in the country varies according to altitude – averaging more than 1,000 persons per square kilometre (km²) in the low Terai region, about 300 persons per km² in hilly regions and as few as 30 persons per km² in mountainous areas.

The rural poor in Nepal include:

- Destitute people, such as those who are sick, disabled or displaced, and abandoned children
- Extremely poor people, such as illiterate or landless individuals, and those with very few assets
- Moderately poor people, such as those who have small farms but are heavily indebted
- The 'nearly poor' – including small farmers who are at risk of falling back into poverty as a result of factors such as conflict, debt and land degradation.
- Land ownership in Nepal has traditionally been concentrated in a feudal system under the monarchy. For most poor rural families, access to land is extremely limited.
- Almost 70 per cent of households have holdings of less than 1 hectare, and many depend on plots that are too small to meet their subsistence requirements. Productivity levels remain low as a result of limited access to new farming technologies, inputs and extension services.
- Because of poor growth in the agricultural sector, living standards in rural areas are deteriorating.
- The growing population has put heavy pressure on cultivable land, especially in the Terai region, where there are also many landless migrants from the hills.

Factors contribute to poverty

- Various factors contribute to chronic poverty in Nepal's steep and mountainous areas. The rugged terrain makes it difficult to promote economic activity and deliver services. These regions are also physically isolated, with poor communications and infrastructure. They are ecologically fragile as well. Increasing population pressure has led to the unsustainable use of natural resources, including overgrazing and deforestation. Erosion in the uplands causes flooding in the lowlands, which can devastate crop yields.
- Moreover, Nepal is prone to frequent earthquakes, severe thunderstorms, flooding, landslides, and glacial melting, whose severity is compounded by the effects of climate change.
- Social discrimination plays a significant role in keeping people poor and marginalized in rural Nepal. Discrimination on the grounds of caste has been officially illegal in the country since 1962 but is still widespread, especially in rural areas. Members of the lowest caste are the most disadvantaged group. Most dalits work as wage labourers for higher-caste farmers.
- There is also a wide gap between women and men in terms of access to health care, nutrition, education and participation in decision-making. Infant mortality is much higher for girls than boys,

and illiteracy is far more prevalent among women than men. Many rural women live in extreme poverty, without any means of improving conditions for themselves and their families.

- Within households, women often have less to eat than men, and mothers' insufficient calorie intake has led to chronic malnutrition among their infants. At the same time, more women are heading households and taking on the burden of sustaining the rural economy.
 - Women constitute more than 60 per cent of the agricultural labour force but have little access to land, production technology and training.
 - Lack of economic opportunity and conflict have prompted many of the most productive members of rural households to migrate from Nepal in recent years. In fact, Nepal is one of the world's highest recipients of remittances, which totalled some US\$5.1 billion from Nepalese living abroad in 2012. Yet almost 80 per cent of remittance income is used for daily consumption, and 7 per cent is used for loan repayment. Less than 3 per cent of all remittances are used for capital formation.
 - Poor families are often obliged to send their children to work rather than to school, perpetuating the cycle of poverty. About one quarter of children in Nepal are engaged in some kind of family or wage labour.
-

Agricultural Development – Status, Its contribution to national economy, challenges

Agriculture is the major sector of Nepalese economy. It provides employment opportunities to 66 percent of the total population and contributes about 33 percent in the GDP. Therefore, the development of agriculture sector is key for the development of national economy.

Priority of Agricultural Development

- Increasing production and productivity of key agricultural crops
- Promoting agriculture commercialization and modernization for increased efficiency and farm income
- Addressing both food and nutrition security
- Local economic development through agribusiness cluster development
- Alleviating poverty through smallholder agriculture development

Importance of agriculture in Nepal

1. Source of food

Agriculture is determined as main source of food in Nepal. All food and cash crops are grown from agriculture. Agriculture is the mean to survive. We get all required food from it. So, it is a main source of food.

2. Source of raw material

Agriculture is not only source of food but a dominant source of raw material. Jute, sugarcane, tobacco etc. are produced or obtained from agriculture.

3. Employment opportunities

Agriculture is the primary source of employment. According to NLFS about 13.9% of total population depends upon agriculture. Thus, almost all farmers are completely engaged in agriculture, making agriculture dominant in agricultural employment.

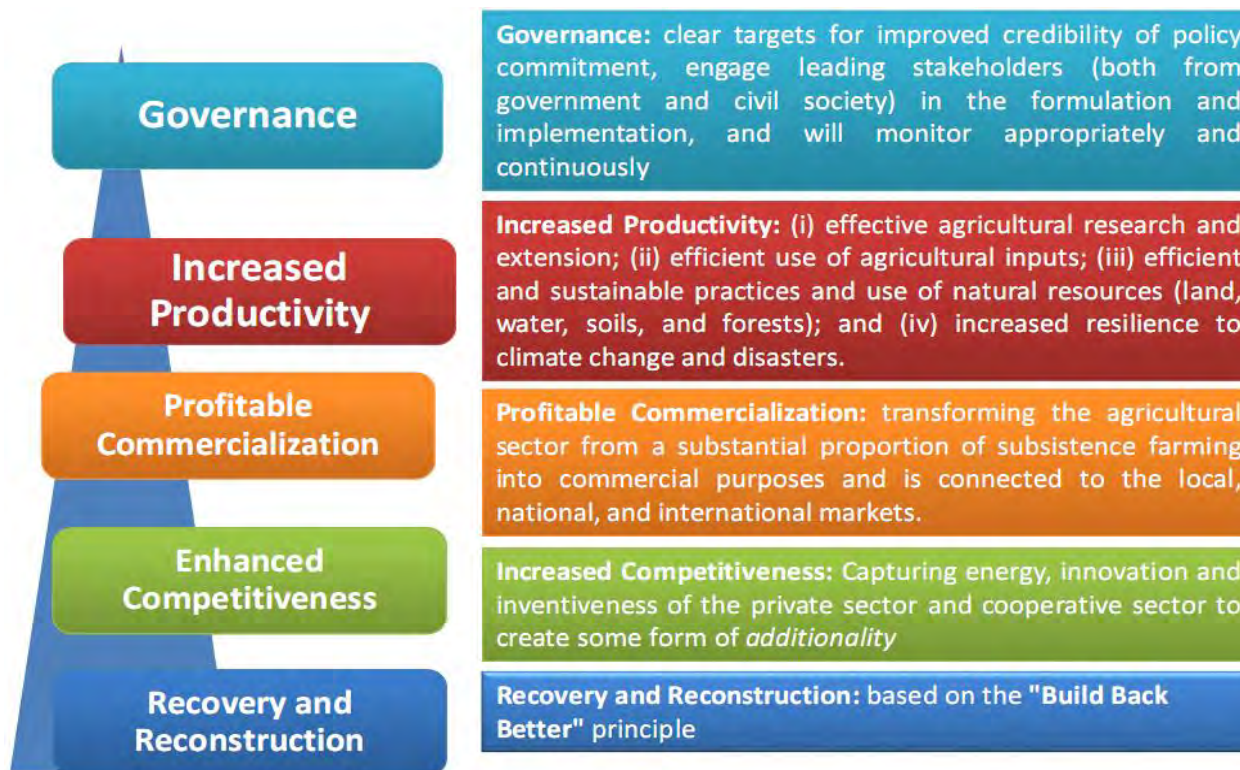
4. Source of foreign trade

Most of the agro-product is export to foreign or international market. About 60% of agro-product is exported to foreign land. Tea, coffee, woollen clothes, leather jackets etc. are exported which is agricultural products.

5. Increase in Government revenue

Since, 60% of goods exported are obtained from agriculture. So, Government of Nepal includes export tax, tax, registration tax etc. which is the important source of Government revenue.

Future Direction:



Secondary and tertiary sector development – Status, its contribution to national economy, challenges.

Secondary Sector

The secondary sector is the part of the economy that transforms raw materials into manufactured goods. It can be summed up as businesses that refine, manufacture or construct goods.

- Secondary sector supports both primary and tertiary sector.

Examples:

Automobile production, Chemical and engineers industries, Aerospace manufacturing, Textile, Breweries and bottles, Construction, Shipbuilding etc.

The Secondary sector which consists of manufacturing has comparatively less contributions to employment generation and GDP (17%) even though FDI flow to this sector is high.

The situation of production oriented industry sector could not achieve the desired growth as a result of unending political transition, uneasy trade relation, persistent energy crisis, weak infrastructure, failure to improve investment environment as expected.

Major Secondary Sectors Of Nepal and its contribution in National economy

1. Mining and Quarrying:

Production of mining and quarrying sector is estimated to grow by 0.9 percent in the current fiscal year. This sector recorded a growth of 5.4 percent last year. The growth rate of this sector remained low in this fiscal year as compared to the previous fiscal year due to massive earthquake that occurred in April 25, 2015 causing sharp fall in the 10 exploration of boulders, concretes, sand and soil and ban imposed by the government on the construction of new building for some time. The growth rate of this sector in the preceding five years averaged 3.1 percent.

2. Manufacturing:

Performance of manufacturing sector has not been satisfactory during the last decade. Growth rate of this sector that stood at 6.3 percent in FY 2013/14 is estimated to stagnate at only 2.4 percent in FY 2014/15. Production of this sector has been affected by the earthquake of April 25 that physically damaged some industries causing failure to operate them. Besides, labor shortage even in operational industries and reduced demand of produced goods has resulted in the lower growth rate of this sector. The average growth rate of this sector has remained at 4.0 percent in last five years. Contribution of this sector to GDP, which was 8.5 percent in FY2001/02, continued to decline in the later years and estimated to be contained at 6.8 in the current fiscal year.

3. Electricity, Gas and Water:

Production of electricity, gas and water sector is estimated to rise by 1.2 percent in FY 2014/15. Production of this sector had recorded a growth of 3.5 percent in the last year. Growth rate of this sector in last five years has averaged at 3.5 percent.

Contribution of this sector to GDP is estimated to remain at 2.1 percent in the current fiscal year.

4. Construction:

This sector, which grew by 7.1 percent in the previous fiscal year, is estimated to grow by 3.6 percent in the current fiscal year. Construction sector recorded a lower growth rate as compared to the 11 previous fiscal year as the government put immediate ban on construction of new homes after the earthquake of April 25, which resulted in short supply of supply of construction materials together with reduction in production of such materials. Average growth rate of this sector has been 3.6 percent for the past five years.

Contribution of this sector to GDP stood at 5.9 percent in the current fiscal year.

Tertiary Sector

It is the sector of economy that provides goods and services to consumers using goods produced by other sectors. It is also known as the service sector as it is mainly concerned with offering services rather than producing tangible goods.

Examples:

Hotels, Call Centers, Communications, Education, Legal Services, entertainment etc.

Major Tertiary Sectors of Nepal and its contribution

The tertiary sector has been growing in the past year and currently is the highest contributor to GDP (50%). The growth in the tertiary (Service) sector has been mainly driven by private sector investment.

1. Hotels and Restaurants:

Production of hotel and restaurant sector is estimated to have grown by 4.0 percent in current fiscal year 2014/15. Production of this sector had recorded a growth of 6.8 percent in the last fiscal year. Decreased tourist arrivals; physical damages caused to hotels and restaurants by the earthquake; and fall in domestic tourism activities have resulted in low growth of this sector in the current fiscal year as compared to that of the previous fiscal year.

-Growth rate of this sector in the last five years has averaged 6.0 percent.

-Contribution of this sector to GDP is estimated at 1.8 percent in current fiscal year.

2. Transport, Storage and communication:

Production of this sector that grew by 8.3 percent in last year is estimated to grow by 5.2 percent in current fiscal year. Average growth rate of this sector has been 6.9 percent in last five years. Contribution of this sector to GDP is estimated to remain at 10.6 percent in current fiscal year.

3. Real estates, Renting and business activities:

Output of this sector in current fiscal year is estimated to grow by 0.8 percent. Such output growth was recorded at 3.6 percent last year. Production of this sector is estimated to grow marginally in the current fiscal year due to devastating earthquake that wrecked damage to the housing business causing recession in real estate business.

-This sector averaged annual growth rate of 3.0 percent in the past five years.

-Contribution of this sector to GDP is estimated to remain at 7.7 percent in current fiscal year.

4. Financial intermediation:

Transactions of Nepal Rastra Bank, commercial banks, development banks, financial institutions, micro finance institutions and cooperatives come under the banking group of this sector. Likewise, transactions of the Insurance Board (BeemaSamiti) with that of life and non-life insurance companies come under the insurance group of this sector. Similarly, transactions of Security Board of Nepal, Employees Provident Fund, Citizens Investment Trust, etc come under social security contribution group.

- Growth rate of this sector that stood at 3.7 percent in the last fiscal year is estimated to grow by 1.4 percent in the current fiscal year.
- Growth of this sector is likely to fall in current fiscal year as compared to that of previous fiscal year owing to negative impact caused by the earthquake on loan investment made towards sectors including tourism, construction, agriculture, and increased volume of insurance claims.
- Average growth rate of this sector during the last five years has been 2.2 percent.
- ***Contribution of this sector to GDP is estimated to remain at 3.9 in the current fiscal year.***

5. Public Administration and Defense:

Based on budgetary allocation and expenditure on public administration and defense of the central government in the current fiscal year, output of this sector is estimated to increase by 5.8 percent against this sector's growth of 5.0 percent in the previous fiscal year. Average growth rate of this sector in the preceding five years has been 4.8 percent.

- ***This sector is estimated to contribute 1.8 percent to GDP in the current fiscal year.***

6. Education:

Due to expansion of government budget and expenditure in the education sector together with expansion of educational activities in the private and non government sectors, output of this sector is estimated to grow marginally in FY 2014/15 as compared to previous fiscal year and remain at 5.0 percent. Output of this sector had increased by 4.8 percent last year. This sector's output growth has averaged 4.9 percent during the preceding five years.

- **Contribution of this sector to current year RGDP is estimated to remain at 6.8 percent in the current fiscal year.**

7. **Health and Social Work:**

Output of this sector is expected to grow at a higher rate of 10.0 percent in this fiscal year as a result of increased budgetary allocation and expenditure by the government together with increased transactions of the government and non-government, and the private sector in the health sector following the earthquake.

Such growth in the previous year stood at 4.5 percent. Annual average output of this sector for the preceding five years has increased by 6.1 percent.

- **Contribution of this sector to GDP is estimated to stand at 1.6 percent in the current fiscal year.**

Secondary and Tertiary Sector contribution

Analysis of sector-wise trend of economic growth for the last decade reveals that though the growth rate of the services sector remained satisfactory, industry sector's growth rate could not record as such.

- Contribution of secondary & tertiary sector to national economy
- Contribution of agriculture and industries sectors to GDP has a declining trend while services sector is on rise
- Contributions of secondary and tertiary sectors to GDP were 17.0 and 45.1 percent in fiscal year 2001/2002 at prevailing prices.
- Where as the contribution of secondary sector has come down to 14.5 percent while contribution of tertiary sector has gone up to 53.2 percent in the current f/y-2015/16.
- Average contribution of secondary sector in last five year has remained at 14.5 percent.
- ***Contribution of this sector to GDP has averaged 50.9 percent in preceding five years.***

Secondary Sector Challenges

1. *Regulation and traceability:*

- Facing increasing regulation and compliance measure.
- Everything from health and safety to waste management is surrounded in red tape.
- Regulation often require ability to track items and material used in the manufacturing process. E.g.; UDI(Universal Device Identification)- medical devices REAC (Registration, Evaluation, Authorization, and Restriction of similar laws) – chemical and electronics
- Product development and innovation:

- Moving at a lightning pace
- Need to stay relevant Companies need to be structured in managing innovation

2. *The manufacturing skills gap:*

- Though manufacturing firms are doing what they can do to inspire new generation of manufacturing employees and experts, there is considerable void when it comes to skills and experience.
- Local environment and employee well-being, sustainability and environmental regulations can be expensive.
- Mfg. needs to be aware about such costs.

3. **Balancing maintenance with throughput:**

- Keeping equipment functioning
- Regular preventive maintenance
- If postponed or delay- (lose market share) Or replaced factory component with lower quality items-(cause health and safety issue and at the end resulting increase in operating cost)

4. Lack of quality engineers joining manufacturing sectors:

5. Political Instability

6. Impact of Labour unions

Tertiary sector challenges

1. **Lack of adequate systemization**

- Management and marketing sector
- Due to rapid developments in information technology,
- globalization, changing customer needs/preferences, and the changes in relative wealth between the developed and newly developing economies, the effective management of service systems addressing productivity and quality issues

2. **Determining how to utilize resources most effectively:**

3. **Monitoring and measuring Quality of services:**

- Different people perceive service differently

4. **Predicting future events, conditions, customer demand, price/cost levels:**

- Needed in order to achieve objective, to gain competitive advantage
- Future is uncertain
- Dynamic

5. Facility location and layout:

- Raw material, manpower, market and customer, geographical structure, climate, socio-cultural factor, tax provision, infrastructure.
- Internal settings and fittings and construction such store rooms, warehouse, restroom, office room, building structure for machinery set up, canteen ,parking facilities.

6. Political instability

13th planning perspective-----

LONGTERM VISION: To create an competitive environment in relation to whole world as well as regional blocs and uplift the role of industrial sector in and for the country.

Expected contributions:-

- increase in establishment & expansion of industry
- Increase coordination in market
- Planning to provide 1.5 lakhs employment in industry sector—50000 in each year
- Optimum utilization of latest technology to produce quality product resulting in export increment and thus minimize trade deficit
- Protection of IPRs

Strategies

- To develop supportive infrastructure for the development of industries.
- Priority to indigenous industries
- To create favourable environment to attract investment.
- To encourage NRN's for investment
- To provide industrial related skills to marginalized group and uplift their living standard

Working procedure:

- Developing separate industrial region
- Focus on fuel and energy
- Encouraging private, co-operatives and NRN's for investment

Problems and Challenges:

- Lack of peace, harmony and security
- Strikes and bandas
- Unhealthy labour relation
- Shortage of energy
- Quality

14th Periodic Plan (2073/74 – 2075/76)

S. No.	Index/Goals	Current Position	Target
1	Increasing yearly average economic development (%)	0.77	7.20
2	Increasing yearly average agricultural sector (%)	1.33	4.70
3	Increasing yearly average non-agricultural sector (%)	0.63	8.40
4	Population below poverty line (%)	21.60	17
5	Human development index	0.54	0.57
6	Average life expectancy (%)	71	72
7	Net student admission in primary level (%)	37.70	45
8	Literacy in 15-24 years age group (%)	88.60	91
9	Electricity production (MW)	829	2,279
10	Population with internet access (%)	46.4	65

Strategy

1. Increasing production by investing in agricultural sector, tourism, and industrial as well as small/medium scale businesses.
2. Building infrastructures for energy resources, road and aerial transportation, information & communications, rural urban connection and tripartite agreements between Nepal India and China.
3. High and sustainable human development by giving importance to social development, social conservation and social security.
4. Economic, social and governmental improvement, safe and dependable public funds, clean, transparent and friendly public services, and human rights conservation.

5. Increase gender equality, inclusiveness, environmental conservation, use of science and technology, etc.

Challenges

1. Rapid economic growth rate and immediate poverty reduction through fair distribution of resources.
2. Considerable improvement of human development and the development of overall economical prosperity and sustainable economic development.
3. The reduction in disparity in the economic growth of the Nepalese society and establishment of Nepal as a social justice-based equitable and welfare state.
4. Expansion of economic sector, maximum utilization of rural masses, and decentralization of industries and adequate employment opportunities.
5. Make the country competitive and business oriented by making sustainable agricultural changes.
6. Solving the energy crisis, minimizing dangers of outbreaks and economic disasters, efforts to adapt to the global climate change.
7. Construction, development, and restructuring of infrastructures to connect rural and urban development programs, and make it an aspect in economic development.
8. Making development programs, integrated work programs, and demographic development effective to provide services to the public.
9. Increasing efficiency in regional and local level development to make clean and effective administrations.
10. The work of reconstruction of the state to be completed by the regional and local development leaders and given to the elected representatives, and strengthening the national planning implementation system.

Opportunities

1. After Nepal's constitution was issued, it solved the political problems and Nepal entered into social and economic development.
 2. There is immense possibility for economic development if we can properly utilize fertile grounds, water resources, forests, minerals, biological diversity and geographical beauty, as well as other natural resources.
 3. More people are getting economically active, and with more skilled manpower getting trained and educated, it helps in the social and economic development of the society.
 4. The use of physical and other basic infrastructures that were previously unused are being put into use .
 5. The highest return can be gotten from the social and economic sector investments.
 6. Over half of the financially active public has been integrated public co-operative and community systems.
 7. Cooperative and private sectors have the opportunity to prosper financially by the government's fiscal policy and help in making the government prosperous.
 8. Non-resident Nepalese are investing in Nepal more than ever.
 9. The rapid expansion in the middle class population in neighbor countries has increased opportunities to expand tourism, increase foreign investment, export and certain services sectors in Nepal.
 10. Skills learned by Nepalese citizens in foreign employments are used in enterprises and entrepreneurship, knowledge, technology and other operational opportunities in Nepal.
-

Tourism in Nepal- Scope and Challenges

Tourism is the activities of people traveling to and staying in places outside their usual environment for leisure, business or other purposes for not more than one consecutive year.

Definition of Tourism

Mathieson and Wall (1982) created a good working definition of tourism as "the temporary movement of people to destinations outside their normal places of work and residence, the activities undertaken during their stay in those destinations, and the facilities created to cater to their needs."

According to Macintosh and Goeldner (1986) tourism is "the sum of the phenomena and relationships arising from the interaction of tourists, business suppliers, host governments and host communities in the process of attracting and hosting these tourists and other visitors."

Tourism In Nepal

- Tourism is the largest industry in Nepal, and the largest source of foreign exchange and revenue.
- Nepal, a small mountainous country, is blessed with natural beauties. Possessing eight of the ten highest mountains in the world, Nepal is a hotspot destination for mountaineers, rock climbers and people seeking adventure.
- The Hindu and Buddhist heritage of Nepal and its cool weather are also strong attractions.
- For those who love adventure travels, Nepal offers endless options along with the beautiful views of landscapes.
- Tourism in Nepal has been seeing increase in the number of visitors each year which only reflects the growth of this industry in Nepal.

Prospects of tourism in Nepal

Nepal is a small country but there are many things world recognized about it. Nepal has immense potentiality of tourism development due to following major reasons:

1. Natural beauty:

Nepal is a country full of natural beauty. Fast flowing river, evergreen hills, snow capped mountains etc. makes Nepal look attractive and majestic. Yearly thousands of tourists visit Nepal to have glance over her magnificent beauty.

2. Religious places:

Nepal is the destiny for Hindus. The greatest and biggest temple of Hindu, Pashupatinath temple is located in Kathmandu Nepal. The largest statue of Shiva in the world, 243ft is located in Bhaktapur (Sanga), Nepal. Other many famous temples, shrines etc. are in Nepal such as Swambhunath, Changunarayan, Budanilkantha etc.

3. Art and architecture:

Nepal is renowned for its natural and cultural heritage and is generally reputed for the pagoda style of temple which is rare in the world. Many tourists visit Nepal to know the art and architecture of Nepal.

4. Climate and cultural Diversity:

Nepal is rich in both climate and cultural sector. Different climate can be found in each topography of Nepal. Extreme cold in Himalayas, mixed climate in Hilly and hot climate in Terai. Due to variety in climate, bio-diversity exists in Nepal.

Moreover, Nepal is rich in cultural aspects. There are more than 60 ethnic groups found in Nepal with 103 languages. So, many tourists come to visit Nepal to learn or for research purposes.

5. Less expensive:

Nepal is an underdeveloped country with few infrastructures. So, Nepal is less expensive country than others. Tourists can visit Nepal in reasonable price.

Importance

- Sources of foreign exchange earnings
- Employment opportunities
- Sources of public as well as private income
- Cultural exchange
- Publicity of nation

Contribution in Nepalese economy

- The Nepalese economy witnessed its strongest real GDP growth of 5.5% in 2014 due to a rebound in agriculture and increased domestic demand.
- Tourism is an important industry for Nepal's economy. According to the World Travel and Tourism Council (WTTC), the total direct contribution of travel and tourism to Nepal's GDP was NPR 75.6 billion, contributing 4.2% of the world economy GDP in 2014.
- Travel and tourism generated 426,500 jobs directly in 2015(3.2% of total employment) and this is forecasted to grow by 6% In 2016 to 452,000(3.3% Of total employment).
- The sectors like hotels industry, travel and tour industry, airlines industry, entertainers etc. are seemed to be directly related to tourism.
- Similarly, home stay services and its providers are also directly affected by the number of the tourists visiting Nepal.
- Similarly, each tourist and his/her spending of each penny in Nepal generates a new employment or serves to the existing employment directly or indirectly.

Problems

1.Lack of transportation and communication:

Nepal is economically poor country. Nepal has not been able to provide transportation and communication facilities in all sectors. So, tourists who visit Nepal cannot get a chance to observe all parts of Nepal.

2.Lack of Trained tourism manpower:

Tourism industry needs trained and untrained manpower. Trained manpower is scarce in Nepal. Such as: Geographical experts, Trained and export guides etc.

Nepal is economically poor country. Nepal has not been able to provide transportation and communication facilities in all sectors. So, tourists who visit Nepal cannot get a chance to observe all parts of Nepal.

2.Lack of Trained tourism manpower:

Tourism industry needs trained and untrained manpower. Trained manpower is scarce in Nepal. Such as: Geographical experts, Trained and export guides etc.

3.Lack of good qualities hotels:

According to the fiscal year 2009\10, there were 103 stars hotels with 9613beds.the hotels are not well managed and are unhygienic. So, tourists do not prefer to visit Nepal due to unhygienic and unmanaged hotels.

However, there are more problems of tourism in Nepal which are as follows:

4. Political instability
5. Fuel and energy crisis
6. Lack of security and increasing crime rates.
7. Lack of Sanitation

Efforts of Government to develop tourism in Nepal

1. Visit Nepal, 1998
2. Nepal Tourism Year, 2011
3. Visit Lumbini Year , 2012
4. Nepal Tourism Vision 2020
5. Development of New Tourist destinations
6. Eco – tourism , ACAP and KCAP

13th five year plan and its concern towards tourism sector.

Current status

According to the 13th five year plan of Nepal government, the current status of tourism in Nepal is as below:

- The activities relate to the development of tourism infrastructure is on the process.
- Due the re-establishment of world tourism area and the hospital environment in Nepal, the arrival of tourists has increased by 22.1% and reached to 8 lakhs during the recent plan period.
- 18 tourist areas are selected covering all the 75 districts for development and preservation.

Problems:

- Use of heritages of cultural and national importance for the personal vested interest due to increasing urbanization and increasing rate of land cost.
- Lack of sufficient tourist information.
- Lack of reliable air transportation services.
- Lack of integrated infrastructural development of tourism spots currently prevailing in the country.
- Strikes and political instability

Challenges:

- To remove the negative impression of tourists towards country due to frequent strikes and political instability.
- To use the revenue collected from the tourism sector for the betterment of the same sector.
- To establish Nepal as an excellent tourism spot.
- To correctly estimate the contribution of the tourism sector in the Nepalese economy and to increase the contribution of the sector in the economy.

Long term vision:

To establish Nepal as an attractive tourist destination.

Objectives:

- To develop Nepal as an attractive, beautiful and safe destination in the world map in order to increase its contribution in the economy.
- To multiply the rate of tourist arrival in Nepal with the help of national and international tourism development programs and distribute the collected revenue in equitable and justifiable manner.

Strategies:

- To co-operate with private sectors for the development of tourism.
- To develop the infrastructure for new tourist destinations in an integrated manner.
- To generate employment by the efficient use of the diversity and rural Tourism.
- To run all season tourist activities in the country and to support the internal tourism.
- To advertise and publicize the country, specially targeting the neighboring countries.
- To ensure the sustainable tourism development by providing the sufficient and qualitative tourism services.

Labour – employment Stats, domestic and foreign employment challenges

Going from one country to another country for job and to earn money is called foreign employment. People of Nepal go to different countries of the world for jobs and earning. It uplifts the life standard of the people and has become an important source of earning foreign currency. Due to lack of job opportunity, many Nepalese youths are compelled to go to various countries of the world in search of

jobs. This trend is increasing day by day. It has an immediate benefit but it is not beneficial for a long term. The Nepalese labour and sweat is being used in foreign countries and there is scarcity of human power for the development of our own country.

IMPORTANCE OF FOREIGN EMPLOYMENT

- Country can get lots of foreign currency as the remittance which can be used to establish industries in the country. Such industries provide job opportunities in the country.
- People who went overseas to work can learn different skills and technologies which can be beneficial for the development of our own country.
- Foreign employment reduces the unemployment problem of a country. It may help to develop international relations with other countries because the country has to do labour contract with other countries and embassies has to be established there.

MEASURES TO OVERCOME THE PROBLEMS SEEN IN THE FOREIGN EMPLOYMENT

Although foreign employment has helped a lot to solve unemployment problem prevailing in our country as well as has increased the living standard of the people, it has some challenges too. So, following are the measures to overcome the challenges seen in the foreign employment:

1. Mostly, the semi-skilled and unskilled manpower go to foreign countries. So, they should be well trained about the work before going there.
2. The workers should learn the language where they are going so that no difficulties can be seen while working.
3. The companies or agents should teach the workers about the rules and laws of the country for being aware, otherwise there will be great possibility of being imprisoned and involved in criminal activities if the rule is broken.
4. The government should formulate the laws and policies required for foreign employment to overcome the challenges seen in the foreign employment and strictly implement it.
5. The government too should alert the ambassador to know about the situation of foreign employment and should supervise time to time.
6. Those manpower companies which are illegally established and are involved in illegal draining out of workers should be punished according to law made by the government.

7. The concerned authority for foreign employment should provide legal visa to the workers and punish those who intend to give illegal visa for foreign employment.
8. Those manpower companies which are cheating the workers as they do not get good job as contracted before should be strictly banned and punished.
9. The Manpower Company or brokers shouldn't send the Nepali people for long hour working jobs.
10. Those people who are mentally and physically tortured as well as sexually exploited should be rehabilitated by the ambassadors of the particular country.

Economic Survey 2071/72

- Labor and employment policies, plans and programs are in operation focused specially on domestic labor management, vocational and skill development training, industrial peace building etc.
- Along with developing harmonious relationship between employers and employees with mutual trust and cooperation for mutual benefits, ensuring work friendly environment for the employees in industrial enterprises is also equally important.
- country has failed to generate employment opportunities at home, about 1,500 workers are leaving the country everyday in search of foreign employment. About 3.6 million people have left the country for foreign employment through both formal and informal mediums. Of this, 74.0 percent are unskilled, 25 percent semiskilled, and with mere one percent skilled workers.

Table 7 (e): Country-wise Foreign Employment Status

S.N	Country	Male	Female	Total
1	Qatar	83163	1748	84911
2	Malaysia	148534	4330	152864
3	Saudi Arab	67122	297	67419
4	UAE	31682	5682	37364
5	Kuwait	5932	707	6639
6	Bahrain	2698	416	3114
7	Oman	1166	322	1488
8	South Korea	2670	131	2801
9	Lebanon	116	411	527
10	Israel	88	254	342
11	Afghanistan	966	6	972
12	Japan	1495	56	1551
13	Others	3169	1579	4748
	Total	348801	15939	364740

Note: By the end of mid-March 2015

Source: Department of Foreign Employment

14th plan Provision

Challenges and problem

1. Mismatch between the demand for and supply of labour.
2. Rising unemployment.
3. Low minimum wages.
4. Limited efforts in developing skill and entrepreneurship.
5. Lack of clear norms of occupational safety and health.
6. Mismatch between the manpower produced by educational institution and employment available in the market.
7. The prevalence of various kinds of deception and fraud in foreign employment.
8. Political interference in social dialogue and collective bargaining.
9. Weakness of the employment information system.

Strategies

- Formulate a national employment policy, guaranteeing employment for a certain duration.
 - Make a foreign employment safe, dignified reliable and gainful.
 - Establish harmonious industrial relations by protecting the rights of workers and creating an investment friendly environment.
 - Develop a workforce capable of competing at national and international levels by increasing opportunities to participate in skill and vocational training.
 - Eliminate all forms of child labour.
 - Mobilize the social security fund effectively.
-
-

UNIT 4 Resources in Nepal

Natural resources- Land of Nepal, Rivers and Lakes of Nepal

Soil Types in Nepal

There are different types of soil in Nepal. Various factors such as geology, climate and vegetation types have resulted in variations in soil properties. There is very limited research about soils in Nepal. So far, soils of Nepal can be divided into six broad types such as alluvial soil, sandy gravel soil, lacustrine soil, rocky soil and mountain soil.

Alluvial soil is found in Tarai and in river basins. It is formed by the materials deposited by rivers and it's very fertile. The sandy gravel and gravel soils are found in Churiya where gravel and conglomerate are predominantly found. This is not fertile soil. There are various types of soil in the middle Hill. But rocky soil is predominant. The lacustrine soil is found in the Kathmandu Valley.

Types of Soil

1. Alluvial Soil:

- It is formed by a mixture of materials deposited by rivers and decayed vegetation.

- Found especially in Terai and River basins
- Calcium, Phosphorus, Potash and another mineral rich soil-
- Soil is very fertile
- Suitable for growing Paddy, Wheat, Jute, Oilseed, Tobacco and Sugarcane

2. Sandy Boulder Soil:

- It is made up of a mixture of sand, rocks and other rough loose particles deposited by the river.
- Mainly found in Bhabar Tract, Inner Terai and Chure Range.
- The ratio of Biological elements and Fertile soil is less in Sandy Boulder and the fertility of these soil is very less. Water holding capacity of this soil is very less.
- Its difficult to irrigate and agriculture this soil
- - These soil's maximum part is covered by forest.
- Sal, Sisso grows very well in this type of soil.

3. Red Brown Soil:

- The broken rocks mixes with decayed vegetation in Mahabharat range and form a soil named Red brown Soil.
- As these soil have less iron it is of red-brown or yellow in colour.
- The deepness of the soil is less and nitrogen, phosphorous and calcium is also less.
- Fruits, Tea, Potato, Maize, Millet grows well here.

4. Lacustrine Soil:

- The soil made due to the dryness in lakes of basins and valleys is lacustrine soil.
- The colour is black
- Best soil for agriculture
- Rice, Wheat, Vegetable grow well
- We can cultivate even in low rainfall in this soil.
- Kathmandu valley has this type of soil

5. Glacial soil:

- It is formed by boulders, sand and stone deposited by a glacier.
- It is found in base of inner Himalaya and main Himalaya
- Fertility of this soil is minimum as the climate is too cold and the deepness of the soil is less. Biological elements are also less.
- Maize, Potato, barley etc. grows well here.

Land System in Nepal

Birta System

- The land achieved by certain individuals(e.g. religious teachers, priests, loyal soldiers etc) from the state (rulers) as a reward is called Birta. This land is exempt from tax. Certain individuals in the society would ingratiate themselves with the rulers. They would dedicate themselves to the advancement of the interests of the ruling class. As a result, they would receive certain amounts of land as a reward for their allegiance to the ruling class. The land thus received from the state is called Birta. But the state had the right to forfeit the grant. This system was abolished in 2016 BS/1959 .

- Jagir land referred to the land that was given to individuals for their regular service to the government instead of salaries in the form of cash. The government personnel who ran the administration were given land as their salaries.

- **Jagir Land System**

The system of granting land to the government staffs partly emerged from the lack of sufficient cash circulated in the then underdeveloped economy. It may be argued that the emergence of Jagir land system was a product of a dearth of enough cash to cover all the government expenses. For example, during the reign of Prithivi Narayan Shah, a soldier would earn around Rs. 76 a year. The size of the army in 1792 was estimated by Kirkpatrick to be between 7,500 to 9,000. The size of the army in 1802 was estimated by Hamilton to be between 9,000 and 10,000. The strength of approximately nine thousand men in 1792 at the prevailing salary would cost about 45 lakhs rupees a year. The total annual revenue at that time was between 25 to 30 lakhs rupees

- **Rajya Land System**

It was the land given to the rulers in the defeated principalities by the state. In course of unification of small principalities by PN Shah many small principalities were defeated. The state provided the defeated former rulers in these principalities with land as an effort to ensure their allegiance to the state in a new political context.

- **Kipat Land System**

It was the land given to the rulers in the defeated principalities by the state. In course of unification of small principalities by PN Shah many small principalities were defeated. The state provided the defeated former rulers in these principalities with land as an effort to ensure their allegiance to the state in a new political context.

- **Raikar Land**

It referred to the land registered under the name of a single person and divided among and cultivated by other individuals by paying the tax to its owner. Those who cultivate the land pay tax to the person under whose name the land is registered. This land system came to an end when cultivators became owners of the land on account of their having cultivated the land, i.e. when they enjoyed their tenancy right.

14th Plan of Government :.....

In order to systematize land management, a cadastral survey of all but a few village blocks was carried out, topographical base maps prepared, and a digital database created, Maps of all VDCs and municipalities now exist and in some places, a digital cadastral system has been initiated.

- In addition, 23857 families of freed kamaiya (bonded laborers) were given plots of land. 13,744 kamaiya were given the opportunity to participate in capacity development and entrepreneurship trainings.
- Another 19,059 haliya were also freed and identity cards were distributed to the members of 4494 of 7781 haliya families.

Objectives

- To create an environment conducive to the optimal use of land and land resources.
- To increase the access of socially and economically backward groups to land.
- To make land administration services simple, easy, transparent and effective.
- To ensure the easy availability of the maps, land services and geographical information essential for infrastructure construction and development.

Rivers in Nepal.....

Rivers in Nepal are treated as goddesses. They are the ever flowing and inspiring source of beauty, abundance and infinite adventure. The rugged topography, extreme variations and excessive snow melting in Nepal make this mountain kingdom blessed with blossoming, flowering rivers, running across the country. This makes Nepal an obvious choice for river adventure.

River journeys in Nepal are electrifying and nerve thrilling. Your life flashes before you as you comfortably hurtle towards monster boulders and towering walls of water. So come let us indulge in this maddening and bone chilling experience.

Ultimate Sports Adventure & Activities

Nepal is a country of adventures. The raging rivers, high mountains, exotic valleys and jungle safaris are all sources of adventure. Cited below are some of the most thrilling and engaging adventurous activities of Nepal.

River Rafting/White Water Rafting

River Rafting is journeying on torrential river on an inflatable rubber boat. A River Raft is the most enjoyable way of checking one's guts. Both amateur and experienced rafters equally enjoy it. A river trip also provides the opportunity for geological surveys and fishing.

In a country like Nepal, blessed by Himalayan rivers, a river trip is one of the best ways to explore a typical cross section of the country's natural as well as ethno-cultural heritage. The river is regarded as a form of goddess and is used for the purpose of various religious rituals under both Hinduism and Buddhism. A variety of cultural activities can be witnessed being performed along the river. The adjoining slopes of the river often harbor dense vegetation and interesting wildlife.

Kayaking

A water sport, kayaking is a very enjoyable river adventure, specially in the blossoming rivers of Nepal. Kayaks are made from a special type of plastic and have floatation devices inserted to aid buoyancy. Kayakers move through the water with a double blade paddle, and are able to negotiate rapids and obstacles on the river.

With its wide range of rivers and wealth of challenging rapids, Nepal is the perfect destination for Kayakink. Whether you are a total beginner or an experienced white water kayaker keen to tackle one of the challenging rivers, Nepal is ideal for you.

Sightseeing

One can spend hours sitting at the banks of Nepal rivers and watching the waves playing with each other amidst the most earthen background. An evening more relaxed, soothing and calm is hard to imagine. If you long for a dream-like, heavenly experience, then let your soul feel the tranquility of being near to Nature's one of the most amiable gift i.e. the rivers of Nepal.

Know-How Of River Basins

The splendid rivers of Nepal can be divided into three categories in accordance to their origins. The first category comprises the three main river systems of the country - the Koshi, Gandaki and Karnali river systems, all of them originating from glaciers and snow-fed lakes.

River system in Nepal :.....

1. The Koshi River System

- The Koshi river system consists of Tamor, Arun, Dudhkoshi, Likhu, Tamakoshi, Sunkoshi and Indravati rivers.
- The Arun and Sunkoshi originate in Tibet. The confluence of these rivers is at Tribeni (near Dharan) in Sagarmatha Zone.
- Flowing for almost 10 kms through a narrow gorge before entering the plains, the 'Sapta Kosi' or simply the 'Koshi', swollen with the waters of the seven rivers, finally merges into the Ganges.
- The Kali Gandaki originates in Mustang and converges with the Trishuli at Deoghat in Chitwan. The river is then called the 'Narayani' and goes on to meet the Ganges.

2. The Gandaki River System

- The Kali Gandaki originates in Mustang and converges with the Trishuli at Deoghat in Chitwan. The river is then called the 'Narayani' and goes on to meet the Ganges.
- The Gandaki river system in central Nepal consists of the Kali Gandaki, Budhi Gandaki, Marsyanghi, Trishuli, Seti, Madi and Daraundi rivers.
- The Kaligandaki is the longest river and the Trishuli, the main tributary of this system.

3. The Karnali River System

- The Karnali river system in Western Nepal consists of the Humla Karnali, Mugu Karnali, Seti and Bheri rivers and is the longest river system in the country.
- The Humla Karnali, which rises in Tibet, is the main tributary. After entering India, this river assumes the name Gogra.

Drainage System of Nepal

1. Koshi Drainage System

- It is longest drainage of Nepal. Arun, Tamor and Dhudkoshi makes it Sapta Koshi in Nepal.
- It is from Kanchanjanga mountain to Langtang area with area cover of 59400 sq. km.

- It has length of 720 km.

A. Arun

- It is main supportive river of Koshi which is originated from Tibet.
- Bhojpur, Dhankuta, Udayapur are the major district in which it runs.
- It has 152 km in Nepal and total of 720 including Tibet
- Major supportive rivers are : Barun, Aakhuya, Pilau,etc.

A. Tamor

- Started from Kanchanjanga mountain and flow through Taplegunj, Terhathum, Pachthar and Dhankuta district of Nepal.
- Length of 198k.m. and total water area of 5800 sq k.m.
- Known as Sapta Koshi after it joins Sun Koshi and Arun river

B. Sunkoshi

- It has total length of 256 k.m. and total area of 14100 sq k.m.
- Bhotekoshi, Likhu, Dudhkoshi, Intrawati.etc. makes Sunkoshi river

C. Indrawati

- Originated from Jugal Himal and gets mixed with Sunkoshi at Dolalghat
- Total length of 68k.m.

E. Tamakoshi

- Originated from Tibet
- Total length of 90k.m. and total area of 2600 k.m.

F. Dudhkoshi

- Originated from Mahalangur Himal of Nepal
- Its water has white color like milk
- Total length of 113k.m.

G. Likhu

- Originated from Solukhumbu district's Rolyaling mountain range
- Total area of 800sq k.m. and length of 23k.m.

2. Gandaki Drainage System

- From Langtang area to Dhabalagiri area
- In hilly region it is known as Saptagandaki where as in Tarai region it is known as Narayani river
- It is originated from Mustang and its area upto Bhaisalotan is 338k.m. and total water area of 3100sq k.m.
- Trishuli, Budigandaki, Kaligandaki, Seti, etc are main river of this drainage system

A. Kaligandaki

- Originated from Mustang
- It get mixed in Gandaki drainage through Nilgiri, Dhabalagiri mountain and Magdi, Seti, Madi, Trishuli, etc. rivers
- Length of 316k.m. and area of 9300k.m.

B. Trishuli

- It is second biggest rivers of Gandaki drainage
- It is originated from Rasuya district's Goasaikunda's Trishulidhara
- Total length of 130k.m. and water area of 1530 sq k.m.
- Dhumche khola, Langtan nadi, Budigandaki are major river of Trishuli

C. Budhigandaki

- Started from Tibet
- It has total length of 117k.m. and area of 3300 sq. k.m.
- Its major rivers in Nepal are:

1. Aakhu khola
2. Malang khola
3. Mache khola
4. Malu khola etc.

D. Marsyandi

- Originated place is Muktinath himal
- It meets with glacier of Peri, Annapurna, Manaslu mountain
- It has total length of 53k.m. and area of 4600 sq. k.m.

E. Seti

- Originated from south part of Annapurna mountain
- It passes through east part of Machapurchere and enters Pokhara and meets Trishuli at Gaighat
- Its length is 125k.m. and area of 3000 sq k.m.

3. Karnali Drainage System

- One of the most important drainage systems of Nepal which is in far western part of Nepal.
- It has runs upto length of 507k.m. and has total area covered of 42000 sq. k.m.
- Chisapani is only place where it runs through human living area
- Known as Ghagara in India
- Consists of following major rivers:

A. Humla Karnali

- Originated from Mansarobar lake of Tibet and runs through Humla district of Nepal so known as Humla Karnali
- It runs through Mugu, Bajura and Humala district boarder and get mixed up with Karnali in Sorugalfa area of Mugu district

- It runs through total length of 529K.M. and total water area covered of 6100 sq k.m.

B. Mugu Karnali

- Runs through Dolpa district of Nepal
- It mix with Mugu khola in Mugu and becomes Mugu Karnali before that it gets mix with small rivers like Maru khola, Mai khola, Chala khola, etc.
- It has total length of 384 k.m. and area of 6060 sq k.m.

a. Bheri

- It consists of both Thuli and Sani Bheri
- Thuli Bheri runs through Dolpa and Soko area's mountain rivers and has total length of 136 k.m. and total area of 3300 sq. k.m.
- Sani Bheri is originated from Dhabalagiri mountain and runs through Jungdumla khola and gets mixed up with Sisne khola and at Ramnaghat it gets mixed up with Thuli bheri
- It has total length of 98k.m. and area of 2650 sq. k.m

D.Seti

- Originated from Bas Rishi Himal of Bajura district
- It travels 202k.m. before it gets mixed up with Karnali river in Doti district
- It has total area of 75 sq k.m.

Others:

Tila (travels 99k.m. in total and has covered 3400sq. k.m. in total)

Budhi Ganga (originated from Saipal himal. Total length of 48 k.m. and total area of 1700 sq k.m.)

Lakes of Nepal

Name of lakes of Nepal

Ghodaghodi Lake, Bishazari Lake Gajedi Lake, Bulbule Lake, Jakhira Lake, Baikhunde Lake, Jhilmila Lake, Jagdishpur Lake, Rani lake, Taudah lake (Kathmandu), Rara Lake (lakes in Pokhara Nepal), She-Foksundo lake, Fewa lake (lakes in Pokhara Nepal), Begnas lake (lakes in Pokhara Nepal), Rupa tal (lakes in Pokhara Nepal), Tilicho lake (Manang), (highest lakes in Nepal and world), Rigm lake, Indrasarobar lake, cho-rolpa lake, kalchuman lake, Rukche lake, Kal lake, Pugel Lake, Dumwa lake, Nanda Bhaulu lake, Maida lake, Gaduwa lake, Jalpa lake gaida lake, khari Barah lake, betkot lake, banjari lake, Suke Tal (Palpa) Satyavati Tal (Palpa), Khaptad Tal (Doti), Barakune Tal (Dang), Syarpu Tal (Rukum), Surma Sarowar (Bajhang), Katuwal Daha (Lalitpur), Nag Daha (Lalitpur), Jagdulla Daha (Dolpa), Soon Daha (Dolpa), Giri Daha (Dolpa), Shankha Daha (Dolpa), Chamakuni Daha (Dolpa), Kuvinde Daha (Salyan), Rudra Tal (Baglung), Kalchhuma Tal (Gorkha), Rani Daha (Syangja), Siswa Tal (Kapilvastu), Bijuwa Tal (Kapilvastu), Mujura Tal (Chitwan), Kasara Tal (Chitwan), Tamor Tal (Chitwan) Munda Tal (Chitwan), Gosaikunda, (glacial lakes in Nepal) Bhairabkunda, (glacial lakes in Nepal) Gopalkunda, (glacial lakes in Nepal) Dudhkunda, (glacial lakes) Damodarkunda, (glacial lakes) Saraswatikunda, (glacial lakes) Ganeshkunda, (glacial lakes) Dudhpokhari, (glacial lakes) Panchpokhari, (glacial lakes) Tinpokhari . (glacial lakes)

1. RARA LAKE

Rara the deepest lake of Nepal lies in the altitude of about 2,990 meters (9,810 ft) above the sea level covering an area of 10.8 km². The fresh water is expanded about 5 kilometers in length and 3 kilometers in width. The lake is best visiting time to the lake is September/October and April/May. Rara lake being surrounded by the rara national park, it has unique floral and faunal importance with rare and vulnerable species. It has been the popular rough route in western Nepal for trekkers. Situated at the high altitude the way of culture and scenery is quite different from the rest part of Nepal. The pine, spruce and juniper forest with snow capped Himalayan peaks enhance the attraction of the trekkers.

2. PHEWA LAKE

Phewa lake lies at the altitude of 742 meters (2,434 ft) above the sea level covering an area of 5.23km². The Annapurna range on the north is only about 28 km (linear distance) away from the lake, and the lake is famous for the reflection of mount Machhapuchhre and other mountain peaks of the Annapurna and Dhaulagiri ranges on its surface. The Taal Barahi Temple is situated on an island in the lake. Phewa lake and water sport is the main attractions of the Pokhara city and the north shore of the lake has developed into a tourist district.

3. BEGNAS LAKE

Another tourist attraction of western Nepal is Begnas Lake, situated around the beautiful city Pokhara. It conserves the different birds which have come to Nepal during the time of bird migration. Begnas lake is suitable for water sport, typical Nepali western culture and fresh water boating. To the north and northeast are the great Himalayan peaks, below which lie terraced paddy field and Begnas Lake a great natural attraction.

4. SHEY PHOKSUNDO LAKE

Shey Phoksundo (Phoksundo Lake) Lake is an alpine fresh water lake in Nepal's Shey Phoksundo National Park. It lies about 3610M (11,849 ft) & covered the 1.91 sq meters area. The lake is the ending point of one of the most famous & adventurous trek named Dolpo trek. Near the lake there are some village where most people are inspired by Tibetan culture & language.

5. TILICHO LAKE

Tilicho Lake is one of the highest lakes in the world, in the 4,919M in Manang district of Nepal. It covers the 4.8 Sq.Km areas. It is the ending point of the Annapurna circuit trek. Tilicho conserves the Himalayan flora and fauna and other high altitude fresh water species. It is also known for night camping, mountain cycling through the Thorong la pass. During the trek time trekkers will cross the Kaligandagi River & its gorge.

6. GOSAIKUNDA

Gosaikunda is another beautiful lake that lies in the Russia district inside the Langtang National Park. It is located at an altitude of 4,380 m and covered 4.0 sq km area. The lake is an origin of Trishuli river, fast flowing river & most famous for rafting. Gosaikunda area has been delineated as a Hindu religious site. Every year on the occasion of Janai Purnima, when thousands of pilgrims from Nepal and India visit the area. It is believed to have formed from the digging of the land by the Trishul of lord Shiva. It is also one of the popular trekking routes.

Water Resources in Nepal

Water Resources

Water resources are the sources of water that are useful or potentially useful. Uses of water include agricultural, industrial, household, recreational and so forth. 97 % of the water on the earth is salt water and only three percent is fresh water.

Sources of fresh water:

- Surface Water
- Under river flow
- Ground water
- Frozen water

In context of Nepal

- The hydropower development in Nepal began with the development of 500KW Pharping power plant in 1911.
- With respect to water resources, Nepal is in Forty One position in the world.(source:nepallica.com)
- More than 6000 rivers including rivulets and tributaries totaling about 45,000 KM in length flow in Nepal.
- There are 33 rivers having their drainage areas exceeding 1000 sq km.
- The three major rivers among them are Koshi, Gandaki and Karnali with the reserving capacity of 48000 cubic meters, which comes to be the 47 percent of the total water reserving storing capacity of Nepal
- It is estimated that Nepal has a total potential to generate 53,000 MW of hydropower.(source: study conducted by Institute of Engineering, TU)
- Fresh water withdrawal in domestic , industrial , agricultural is 3%,1%,96% (DPNet Nepal)
- The electricity demand has been increasing by about 7-9% per year and only 40% of population has access to electricity.
- Total drainage area of all the rivers in Nepal is about 194,471 sq km out which 147,181 sq km lies in Nepal and rest in China and India

Classification of rivers

This classification is based on the flow, water reserving capacity and utility:

1. First class rivers:

Rivers like Saptakosi, Saptagandaki and Karnali falls under this category.

2. Second class river:

Rivers like Mechi, Kamala, Rapti, Babai, Bagmati, which have their origin in Mahabharat range and flow consistently round the year fall under this category.

3. Third class river:

Rivers like Arjun Khola, Sansari, Jamuni, Sirsiya, which originated from Chure hills below the Mahabharat range and get flooded in the monsoon and dry in the winter fall under this category.

Importance of water resource in economic development:

Water resource is very important in the overall development of Nepal. Water resource can be used for electricity generation, irrigation purposes and drinking purposes as well. It is regarded as the basic source of energy. The importance of water resources are as follows:

I. Development of Agriculture:

Nepal is an agricultural country. Agriculture is the backbone of Nepalese economy. The agriculture sector can be developed only with the adequate provision of irrigation. Irrigation helps in crop diversification, increase in production and modernize agriculture.

II. Development of transport and communication:

The development of transport and communication are pre-requisites of economic development. The means of transport like ropeway, cable car, railway, trolley bus can be developed only with the aid of electricity. It also helps to develop means of communication like radio, television, computer, fax, e-mail, internet, etc. These means of communication can be developed with help of hydroelectricity.

III. Development of Industries:

The development of hydroelectricity is the basis of industrialization. One of the obstacles of industrialization in Nepal is inadequacy of electricity. The medium and large scale industries need heavy machinery, which cannot be operated without electricity. Therefore, water resource helps to accelerate the pace of industrialization in the country.

IV. Development of Tourism Industry:

Tourism is major sources of foreign currency of Nepal. The water resource helps in development of tourism industry through the provision of hydroelectricity. Similarly, rivers, waterfall, natural spring, lakes, etc. add the natural beauty of the country. It would help to promote tourism industry by providing the facility of rafting, boating, swimming, fishing, etc.

V. Preservation of forest resource:

At present, Nepal is facing the problem of deforestation. The development of hydroelectricity substitutes the use of firewood. Therefore, the development of electricity helps to preserve forest resource.

Some of the Major Hydropower plants in Nepal:

Project Name	District	Capacity(kW)	Owner
1. Kaligandaki HP Plant	Syangja	144,000	NEA
2. Middle Marsyangdi HP Project	Rasuwa	70,000	NEA
3. Marshyangdi HP Project	Tanahun	69,000	NEA
4. Khimti HP Plant	Dolakha	60,000	Himal Power Ltd.
5. Kulekhani I HP Plant	Makawanpur	60,000	NEA
6. Bhotekoshi HP Project	Sindhupalchok	36,000	Bhote Koshi Power Company
7. Kulekhani II HP Plant	Makawanpur	32,000	NEA
8. Gandaki HP Plant	Nawalparasi	15,000	NEA
9. Upper Modi HP Project	Parbat	14,000	GITEC Nepal Pvt. Ltd
10. Sunkoshi HP Plant	Sindhupalchok	10,050	NEA
11. Indrawati HP Project	Sindhupalchok	7,500	National HP Co.

Thirteen three year Plan on Water Sector (2013/16)

The ongoing Thirteenth Three Year Plan (2013-2016) has defined its long-term vision as to upgrade Nepal from a least developed to a developing country by 2022. Increase access to drinking water from

85% to 96.25%; access to sanitation from 62% to 90.5%; grid connected electricity generation from 758 MW to 1426 MW; access to electricity from 67.3% to 87%; irrigation facilities from 1.3 million ha to 1.5 million ha of irrigable land.

Water Utilization in Nepal

1. **Irrigation:** Irrigation is the largest water use sub-sector affecting the life of many people involved in agriculture. The agricultural sector is largely dependent on the monsoon rains due to lack of adequate modern irrigation facilities. As of June 2014, about 1.3 million ha (76% of the potential) of Nepal's agricultural land has been irrigated but only about 36% of which (i.e. 0.8 million ha) has the year round irrigation services, out of which 0.5 million ha through surface irrigation schemes and 0.3 million ha through groundwater schemes.

2. **Drinking Water:** With an increase in population, the total water demand per year has also increased. As of June 2013, about 86% of the population had access to basic services of drinking water supply and about 11% of country's population had access to safe drinking water supply services. Likewise, about 62% of the population had access to basic sanitary services as of June 2013.

3. **Hydropower:** The estimated theoretical hydropower potential of Nepal is 83,000 MW, out of which 114 projects with a combined capacity of 45,610 MW have been identified as economically feasible ones. The total capacity of the Integrated Nepal Power System (INPS) which Nepal Electricity Authority operates stands at 758 MW.

Issues and Challenges related to Water Resources

1. **Water Supply and Sanitation Issues:** In drinking water supply and sanitation sector, there are several issues like,

- Lack of adequate planning, design and construction of water supply and sanitation projects;
- Lack of appropriate approach towards rural water supply system;
- Improper management of water supply systems of Kathmandu Valley and other urban centers; and
- Lack of water quality standards for drinking water.

2. **Irrigation Issues:** The issues can be summarized as

- Poor performance of irrigation systems
- Farmers' dependency syndromes and sustainability
- Problems of river management
- Weak institutional capability
- Weak relationship between agriculture and irrigation

- Not adequately strong Water Users Associations

3. **Hydropower Development Issues:** there are some legal issues for the development of hydropower such as, non-specificity of water rights and ownership;

- Lack of sub-ordinate enabling legislation;
- Lack of harmony among related legislation;
- Lack of adequate legal provisions to encourage private sector participation in multipurpose projects etc

.....

BIODIVERSITY

Biodiversity refers to all the living things on Earth and the ecological processes

associated with them. Biodiversity refers to the variety and variability of life on earth. Researchers have estimated that there are between 3-30 million species on earth. Currently, we have identified only 1.7 million species.

Unique features of biodiversity in Nepal

- Nepal is ranked 25th and 11th positions in biodiversity richness in the world and Asia.
- Over 550 crop species are identified as having food value, and around half of those species are believed to be currently under cultivation.
- The country's horticultural diversity includes around 400 species and subspecies of horticultural crops, including 45 species of seasonal fruits.
- An estimated 200 species of vegetables, including 11 different local varieties of potatoes, are grown in the country.
- A total of 284 flowering plants, 160 species of animals (including one species of mammal), one species of bird, and 14 species of herpeto-fauna are reportedly endemic to Nepal.
- In Nepal, there are 35 Forest types, 75 vegetation types and 118 ecosystems types.
- For the first time, Nepal established the Chitwan National Park in 1973 for the conservation of biodiversity. Since then 10 National Parks, 6 Conservation Areas, 3 Wildlife Reserves and 1 hunting reserve covering 23.23% land area of the country.

Types of ecosystem in Nepal:

1. **Ecosystem Diversity:** The original study to identify and classify the country's ecosystems was carried out by Dobremez and his colleagues in the late 1960s. The classification was based on altitude, climatic variations and vegetation. It consist of following types:

A. Forest Ecosystem : There has been no comprehensive study to identify and map Nepal's forest ecosystems. Stainton (1972) traced out phyto-geographic boundaries based on climate, vegetation and floristic composition and classified the country's forests into 35 types. This ecosystem occurs from Terai region and eastern part of Nepal These types are often categorized into 10 major groups:

- Tropical Forest
- ▶ Subtropical Broadleaved Forests.
- ▶ Subtropical Conifer Forest
- ▶ Lower Temperate Broadleaved Forests
- ▶ Lower Temperate Mixed Broadleaved Forest
- ▶ Upper Temperate Broadleaved Forests
- ▶ Upper Temperate Mixed Broadleaved Forest
- ▶ Temperate Coniferous Forest
- ▶ Sub-Alpine
- ▶ Alpine Scrub

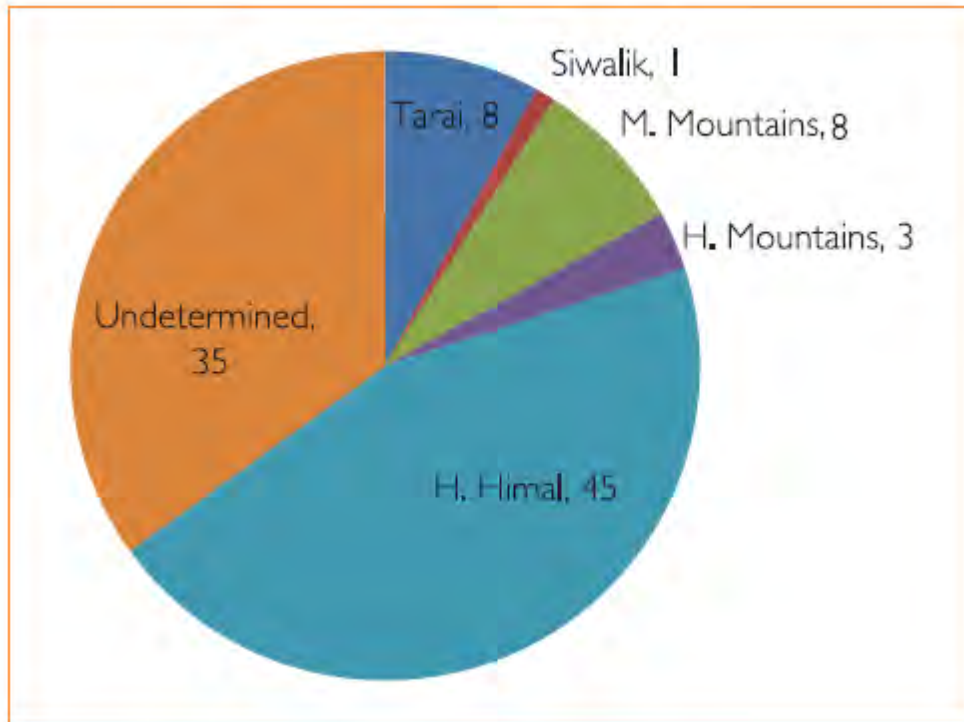
B. Rangeland Ecosystem: Rangeland ecosystems in Nepal are comprised of grasslands, pastures and shrub lands that cover about 1.7 million hectares or nearly 12 percent of country's land area.

Distribution of Rangelands in different Regions

- ▶ Terai and Siwalik: 4%
- ▶ Middle Mountain: 17%
- ▶ High Mountain and High Himal: 79%

C. Wet land Ecosystem: Wetland ecosystems of Nepal fall into two broad categories:

- i) Natural wetlands, comprising of lakes and ponds, riverine floodplains, swamps and marshes, and
- (ii) Man-made wetlands, including water reservoirs, ponds and deep-water paddy fields.



Distribution (%) of wetlands among the physiographic zones

D. Agro based Ecosystem:

The diverse climatic and topographic conditions have favored for maximum diversity of agricultural crops, their wild relatives, and animal species in Nepal. Crops, livestock and forests are the three major components of the country's complex farming systems. Diversity of horticultural systems is an important component of the country's agro-ecosystem, which can be broadly classified into three types: (i) tropical and subtropical; (ii) subtropical and temperate, and (iii) temperate and alpine.

2. Species Diversity:

Species diversity, particularly the *beta* diversity, is very high in Nepal. A total of 284 flowering plants, 160 species of animals (including one species of mammal), one species of bird, and 14 species of herpeto-fauna are reportedly endemic to Nepal. The faunal diversity of Nepalese wetlands includes 230 species of freshwater fish, 102 species of phytoplankton, 109 species of zooplanktons, 192 species of mollusks, and 53 species of amphibians. Nine plants, 55 mammals, 149 birds, 15 herpeto fauna, and 21 fish are included in the IUCN Red List.

3. Genetic Diversity

Information on forest genetic diversity is very limited in Nepal. Among the forest tree species studied, *Dalbergia sissoo*, *Pinus roxburghii* and *Shorea robusta* have been found to possess a high level of genetic diversity. Among the agriculture species, crops such as rice, rice bean, eggplant, buckwheat, soybean, foxtail millet, citrus and mango have high genetic diversity.

4. Mountain Diversity

The mountain ecosystems in Nepal are comprised of a complex of forests, rangelands, wetlands, farmlands and snow and rock covered landscapes that support and sustain a large number of plant and animal species. The Middle Mountains and lower parts of the High Mountains slopes are generally covered by different types of forests. A significant proportion of the High Himal zone is covered by rock and ice. The zone includes 10 of the highest peaks in the world (out of 14 peaks over 8,000 meters), including Mount Everest (8,848 meters).

Vision

Conservation of biodiversity for sound and resilient ecosystems and national prosperity.

Goal and Objective

The overall goal of the NNBSAP is to significantly enhance the integrity of Nepal's ecological systems by 2020, thereby contributing to human well-being and sustainable development of the country. The objective of developing the NNBSAP is to provide a strategic planning framework for conservation and sustainable use of biodiversity and biological resources of Nepal for enhancing local livelihoods and eco-friendly national development, and equitable sharing of the benefits accrued from utilization of biological resources among all sections of the society.

NNBSAP: NEPAL NATIONAL BIODIVERSITY STRATEGY AND ACTION PLAN 2014 – 2020

Strategic Approaches

- Adoption of programme-based, adaptive and multi-stakeholder approaches in the management of biodiversity.
 - Building on and consolidating the successful past efforts and achievements.
 - Promoting participation, cooperation and collaboration of stakeholders.
 - Mainstreaming of biodiversity into relevant sectoral plans, policies and programmes.
 - Promotion of clean energy technologies, and green infrastructures for reducing pressure on biodiversity.
-
-

Climate and Vegetation of Nepal

Climate:

Climate is the weather conditions prevailing in an area in general or over a long period. It is the pattern of variation in temperature, humidity, atmospheric pressure, wind and other meteorological variables in a given region over long periods.

Weather:

- Weather is the state of the atmosphere, to the degree that it is hot or cold, wet or dry, calm or stormy, clear or cloudy.
- Weather refers to day-to-day temperature and precipitation activity.
- Weather is driven by air pressure, temperature and moisture differences between one place and another. These differences can occur due to the sun's angle at any particular spot, which varies by latitude from the tropics.

Nepal's Climate

Nepal's climate varies with its topography. It ranges from tropical to arctic depending upon the altitude. The Terai region, which lies in the tropical southern part of the country, for instance, has a hot, humid climate. The mid-land regions are pleasant almost all year around, although winter morning and nights are cool. The northern mountain region, around an altitude above 3,353 meters has an alpine climate with a considerably lower temperature and thin air in winter as can be expected.

Following are the major climate of Nepal

1) Sub-tropical climate [58m-1200m]

This type of climate is found on Terai of southern Nepal. It covers Terai as well as lower part of Churia range. Summer temperature is 38° to 43° C and in winter temperature is 5° to 15°C. Rainfall occurs in monsoon season. Due to hot and humid climate, forest is thick and tall. This region is suitable for agricultural activities as well as for the development of industries.

2) Warm temperature climate [1200m-2100m]

This type of climate is found in Churai and lower part of Mahabharata. It is covered with deciduous forest which is not so thick. In this climate, eastern part gets more rainfall than west. This region is suitable for horticulture.

3) Cool Temperature Climate [2100m-3300m]

This type of climate is found in between upper part of Mahabharata and lower part of Himalayan region. This climate experience short summer and long winter as summer maximum temperature is about 20° C and winter minimum temperature is 0° C.

4) Alpine climate [3300m-5000m]

This type of climate is extended from 3300m to 5000m below the snow line. Most of the time weather is cold and temperature remains at 0°C and the summer temperature goes up to the 10°C. Due to the cold climate, it is very difficult to carry out agriculture and other economic activities. Trees are small bushes and umbrella shaped.

5) Tundra climate [above 5000m]

This type of climate is mainly found on the Himalayan region. Temperature falls below freezing points. All region are covered with snow. In this type of climate only lichens and mosses are grown in surface in summer.

Factor affecting climate

1) Latitude or distance from the equator

Latitude affects the climate of a place variedly. The climate in the 0° to 30° latitude (tropical zone) is hot, 30° to 60° (temperate zone) is moderate and 60° to 90° (polar zone) is cold. It is caused by the

reasons of unequal heating of the sun owing to unequal distance from the sun to different parts of the earth.

2)Altitude

It is universal law of nature that if altitude (height) increases, by 165 meter, the temperature decreases by 1° C. It means to say that if altitude increases temperature decreases and if altitude decreases, temperature increases. But when the altitude increases, the density of air becomes thinner and thinner since it contains less amount of dust particles, smoke and water vapor. for instance, the terai region and the Himalayan region of Nepal.

3)Distance from sea

Due to the influence of sea, the place nearer to the sea or ocean will have mild climate and further, it will have extreme climate. The nearer places will have the regular exchange of sea breeze and land breeze in both the day and night, which helps to maintain the climate in a moderate way. But the places distant from sea will receive dry wind.

4) Wind Direction

The places located near the sea might not have mild climate always. It is due to the direction of the wind that it blows. Winds have fixed directions to blow. In this case, if the wind does not blow in the nearby places to the sea, the places still might have extreme climate. Similarly, winds often change directions.

5)Land reliefs

Slope of the land facing the seas and oceans will have damp climate and the opposite side will have reverse climate. Similarly, the slope of the mountain that faces the sun and wind will have warm climate and its back will have a cold climate, example: Pokhara and Manang-mustang.

Vegetations of Nepal

Climate determines vegetation

A climatic region is a large area having same climatic pattern and nature of vegetation. In different climatic regions, different types of natural vegetation's are found because climate determines features of natural vegetation's. For instance, coconut cannot grow in the Himalayan region and rhododendron cannot be supported in the terai region of Nepal. The tropical desert region supports the growth of cactus and other thorny plants but Mediterranean region is favorable for Mediterranean shrubs. In the

same manner, equatorial region supports the growth of dense forest and temperature grassland region is good for various grasses only. This is all due to variation in climate.

Types of Natural Vegetation

1. **Sub-Tropical Evergreen** : This type of natural vegetation is found from the northern Terai to Chure range. The main trees are Sal, Sisau, cane. Bamboo and elephant grass is also grown here.
2. **Temperate Deciduous forests**: This type of natural vegetation is found in the Hilly region above the Sub-Tropical Evergreen forest. Pine, beech, rhododendron are found here.
3. **Temperate coniferous Evergreen forest**: This type of natural vegetation grows in Mahabharata ranges. The trees here are cones, pine, fir, oak, Laliguras, Dhupi are found here.
4. **Alpine vegetation**: This is found above the coniferous forest where thorny bush are commonly found because of the low temperature, the climate is cold and dry throughout the year. There are no tall trees, here.
5. **Tundra vegetation**: It is found in the higher Himalayan which is covered with snow. Only moss and lichen grow here.

.....

HUMAN RESOURCES:.....

Resources?

There three types of resources: natural, human and **capital** resources. A natural resource refers to elements or things found in the environment such as **land**, water and minerals. Human resource refers to people, while **capital** resources refer to money, tools and equipment.

Human Resources?

The resource that resides in the knowledge, skills, and motivation of people. Human resource is the least mobile of the four factors of production, and (under right conditions) it improves with age and experience, which no other resource can do. It is therefore regarded as the scarcest and most crucial productive resource that creates the largest and longest lasting advantage for an organization.

HUMAN RESOURCES FOR DEVELOPMENT

Development means a progressive change that occurs in people, family, community and the country as a whole. Imagine how Nepali ancestors lived in the past and how they live today. It is very true to say that their life is much more easier and comfortable compared to that of their ancestors. This change is called development. If there was no development, their life would be similar to that of their

ancestors. Thus, development is a dynamic process. The most important element for the development of a country is human resources or human power. There are three types of human power. They are:

a. Unskilled

b. Semi-skilled

c. Skilled.

THE CONCEPT OF HUMAN RESOURCE DEVELOPMENT

Human resource development in the organisation context is a process by which the employees of an organisation are helped, in a continuous and planned way to:

- Acquire or sharpen capabilities required to perform various functions associated with their present or expected future roles;
- Develop their general capabilities as individuals and discover and exploit their own inner potentials for their own and/or organisational development purposes;
- Develop an organisational culture in which supervisor-subordinate relationships, teamwork and collaboration among sub-units are strong and contribute to the professional well being, motivation and pride of employees.

This definition of HRD is limited to the organisational context. In the context of a state or nation it would differ.

HRD is a process, not merely a set of mechanisms and techniques. The mechanisms and techniques such as performance appraisal, counselling, training, and organization development interventions are used to initiate, facilitate, and promote this process in a continuous way. Because the process has no limit, the mechanisms may need to be examined periodically to see whether they are promoting or hindering the process. Organisations can facilitate this process of development by planning for it, by allocating organisational resources for the purpose, and by exemplifying an HRD philosophy that values human beings and promotes their development.

Features of Human Resource development

The essential features of human resource development can be listed as follows:

- Human resource development is a process in which employees of the organisations are recognized as its human resource. It believes that human resource is most valuable asset of the organisation.
- It stresses on development of human resources of the organisation. It helps the employees of the organisation to develop their general capabilities in relation to their present jobs and expected future role.
- It emphasise on the development and best utilization of the capabilities of individuals in the interest of the employees and organisation.
- It helps in establishing/developing better inter-personal relations. It stresses on developing relationship based on help, trust and confidence.
- It promotes team spirit among employees.
- It tries to develop competencies at the organisation level. It stresses on providing healthy climate for development in the organisation.
- HRD is a system. It has several sub-systems. All these sub-systems are inter-related and interwoven. It stresses on collaboration among all the sub-systems.
- It aims to develop an organisational culture in which there is good senior-subordinate relations, motivation, quality and sense of belonging.
- It tries to develop competence at individual, inter-personal, group and organisational level to meet organisational goal.
- It is an inter-disciplinary concept. It is based on the concepts, ideas and principles of sociology, psychology, economics etc.
- It form on employee welfare and quality of work life. It tries to examine/identify employee needs and meeting them to the best possible extent.
- It is a continuous and systematic learning process. Development is a life long process, which never ends.

Benefits of Human Resource Development

Human resource development now a days is considered as the key to higher productivity, better relations and greater profitability for any organisation. Appropriate HRD provides unlimited benefits to the concerned organisation. Some of the important benefits are being given here:

- HRD (Human Resource Development) makes people more competent. HRD develops new skill, knowledge and attitude of the people in the concern organisations.
- With appropriate HRD programme, people become more committed to their jobs. People are assessed on the basis of their performance by having a acceptable performance appraisal system.
- An environment of trust and respect can be created with the help of human resource development.
- Acceptability toward change can be created with the help of HRD. Employees found themselves better equipped with problem-solving capabilities.
- It improves the all round growth of the employees. HRD also improves team spirit in the organisation. They become more open in their behaviour. Thus, new values can be generated.
- It also helps to create the efficiency culture in the organisation. It leads to greater organisational effectiveness. Resources are properly utilised and goals are achieved in a better way.
- It improves the participation of worker in the organisation. This improve the role of worker and workers feel a sense of pride and achievement while performing their jobs.
- It also helps to collect useful and objective data on employees programmes and policies which further facilitate better human resource planning.
- Hence, it can be concluded that HRD provides a lot of benefits in every organisation. So, the importance of concept of HRD should be recognised and given a place of eminence, to face the present and future challenges in the organisation.

Human Development in Nepal (14th Plan)

१. पृष्ठभूमि

नेपालमा प्रौढ साक्षरता ६५.९ प्रतिशत पुगेको र काम गर्न सक्रिय जनशक्ति (१५-५९ वर्ष) ५७ प्रतिशत रहेको छ । तर विगत केही वर्षदेखि कतिपय प्राविधिक एवं व्यवस्थापकीय सीप र क्षमता भएका जनशक्ति वैदेशिक रोजगारका लागि विदेश पलायन हुने क्रम बढ्दो छ । यसरी एकातर्फ ठूलो सङ्ख्यामा अर्द्धदक्ष एवं अदक्ष युवा जनशक्ति विदेशिनु परेको कारणले विकास निर्माण कार्यमा आवश्यक जनशक्तिको अभाव देखिएको छ भने अर्कोतर्फ देशमा उत्पादित जनशक्ति र देशमा माग भएको जनशक्तिबीचमा तालमेलको अभाव रहेको छ । सरकारले मानव संसाधनको विकासका लागि शिक्षा, स्वास्थ्य, रोजगारी जस्ता पूर्वाधारहरूको विकासको लागि प्रयास गरे तापनि उक्त प्रयास पर्याप्त हुन सकेको छैन । विशेषगरी ग्रामीण क्षेत्र, महिला, दलित तथा अन्य पिछडिएका क्षेत्र, वर्ग, समुदायमा विकासको प्रयास पुग्न नसक्दा मुलुकको मानव

संसाधन विकासले अपेक्षित गति लिन सकेको छैन । यसर्थ, विश्व बजारमा प्रतिस्पर्धा गर्नसक्ने र देशको परिवर्तित आवश्यकतावमोजिम परिस्थिति सुहाउँदो जनशक्तिको सङ्ख्यात्मक र गुणात्मक क्षमता विकास गर्ने क्षेत्रमा मानवीय विकास केन्द्रित हुनु आवश्यक रहेको छ ।

२. अन्धावधिक स्थिति

राष्ट्रिय जनगणना, २०६८ अनुसार नेपालको कुल जनसंख्या २ करोड ६४ लाख ९४ हजार ५०४ रहेको छ । जसमा महिला ५१.५० प्रतिशत र पुरुष ४८.५० प्रतिशत रहेका छन् । औसत जनसंख्या वृद्धि दर १.३५ प्रतिशत रहेको छ । १५ देखि ३० वर्ष उमेरको जनसंख्या २७ प्रतिशत, ६० वर्ष माथिको जनसंख्या ८ प्रतिशत र १४ वर्ष मुनिको जनसंख्या ३५ प्रतिशत रहेको छ । देशभित्र पर्याप्त रोजगारीको अवसरहरू नभएकोले दैनिक करिब १,५०० व्यक्ति रोजगारीको लागि विदेशिनु परेको, औपचारिक र अनौपचारिक समेत गरी करिब ३० लाख जनशक्ति देशबाहिर रहेको अवस्था छ । यसरी विदेशिनेमा ७४ प्रतिशत अदक्ष, २५ प्रतिशत अर्द्धदक्ष र १ प्रतिशत मात्र दक्ष जनशक्ति रहेको छ । वार्षिक ४ लाख ५० हजारभन्दा बढी व्यक्ति श्रमबजारमा प्रवेश गर्ने भए तापनि रोजगारी वृद्धि दर भने २.९ प्रतिशत मात्र रहेको छ ।

३. समस्या तथा चुनौतीहरू

- मानव संसाधन नीति तथा रणनीतिको अभावको कारणले देशभरी छरिएर रहेका उत्पादनशील जनशक्तिको उचित व्यवस्थापन गरी राष्ट्र निर्माणको अभियानमा लगाउन नसक्नु समस्याको रूपमा रहेको छ । देशमा विद्यमान सक्रिय जनसंख्याको प्रचुरताबाट जनसांख्यिक लाभ लिनु, राष्ट्रिय तथा अन्तर्राष्ट्रिय मागबमोजिमको दक्ष जनशक्ति तयार गर्नु, स्वदेशमै रोजगारीको अवसर सृजना गरी वैदेशिक रोजगारीमाथिको निर्भरता कम गर्नु, देशमा उत्पादित जनशक्ति र मागबीच उचित तालमेल मिलाउनु, देशमा सञ्चालित विद्यमान तालिम केन्द्रहरूबीच उचित समन्वय कायम राख्नु, ग्रामीण क्षेत्र, महिला, दलित, पिछडिएका क्षेत्र, वर्ग, समुदायमा पुग्ने गरी विकासका गतिविधिहरू सञ्चालन गर्नु जस्ता चुनौतीहरू रहेको यस क्षेत्रमा एक दीर्घकालीन कार्ययोजनासहितको मानव संसाधन योजनाको खाँचो रहेको छ ।

४. दीर्घकालीन सोच

राष्ट्रिय एवं अन्तर्राष्ट्रिय बजारमा प्रतिस्पर्धा गर्नसक्ने सक्षम र दक्ष जनशक्तिको विकास गर्ने ।

५. उद्देश्य

- राष्ट्रिय तथा अन्तर्राष्ट्रिय बजारमा प्रतिस्पर्धा गर्न सक्षम र दक्ष मानव संसाधनको विकास गरी माग र आपूर्तिबीच सन्तुलन कायम गर्ने ।

६. रणनीति

- रोजगारी तथा स्वरोजगारी सृजना गर्ने खालको प्राविधिक शिक्षा तथा व्यावसायिक तालिममा जोड दिने ।
- दक्ष मानव संसाधन विकासका लागि एकीकृतरूपमा कार्यक्रमहरू सञ्चालन गर्ने ।

७. कार्यनीति

- प्राविधिक तथा सीपमूलक शिक्षालाई गुणस्तरीय बनाई रोजगारीसँग आबद्ध गरिनेछ । (१)
- मानव संसाधनसँग सम्बन्धित निकायहरूको क्षमता अभिवृद्धि गरिनेछ । (१)
- मानव संसाधन विकाससम्बन्धी एकीकृत नीति तथा रणनीति तयार गरी कार्यान्वयनमा ल्याइनेछ । (१)
- युवा जनशक्तिलाई नेतृत्व विकाससम्बन्धी कार्यक्रमहरू सञ्चालन गरिनेछन् । (१)
- मानव संसाधन विकाससम्बन्धी लगानीलाई नतिजामूलक बनाइनेछ । (१)
- शैक्षिक संस्थाहरूबाट उत्पादित जनशक्ति र बजारमा उपलब्ध रोजगारीबीच सामञ्जस्यता कायम गरिनेछ
- छात्रवृत्ति तथा अन्य सहयोग उपलब्ध गराई लक्षित समूहको क्षमता विकास गरिनेछ । (२)
- विकासका साभेदारहरू समेतको संलग्नतामा स्वदेशी जनशक्तिमा सीप तथा प्रविधि हस्तान्तरण गरी मानव संसाधनको विकास गरिनेछ ।
- राष्ट्र निर्माणमा अवकाश प्राप्त राष्ट्रसेवकको ज्ञान, सीप र अनुभवको सदुपयोग गरिनेछ । (२)

८. प्रमुख कार्यक्रमहरू

- एकीकृत मानव संसाधनसम्बन्धी राष्ट्रिय नीति तयार गर्ने ।
- सामान्य प्रशासन मंत्रालयलाई मानव संसाधन मंत्रालयको रूपमा विकास गर्ने ।
- मानव संसाधन विकाससम्बन्धी कार्यमा संलग्न विभिन्न निकायहरूबीच समन्वयात्मक कार्यक्रम सञ्चालन गर्ने ।
- राष्ट्रिय क्षेत्रीय तथा स्थानीयस्तरमा मानव संसाधनसम्बन्धी अभिमुखीकरण अन्तरक्रिया कार्यक्रमहरू सञ्चालन गर्ने ।
- मानव संसाधनको क्षेत्रमा कार्यरत जनशक्तिको क्षमता विकाससम्बन्धी कार्यक्रमहरू क्षमता विकास पश्चात् सोको सदुपयोग भएको नभएको कार्य सम्पादन निश्चित गर्ने संयन्त्रको विकास गर्ने र अन्य देशको मानव संसाधन विकाससम्बन्धी अनुभव आदान प्रदान गर्ने जस्ता कार्यक्रमहरू सञ्चालन गर्ने ।

९. अपेक्षित उपलब्धि

राष्ट्र निर्माणको विविध क्षेत्रमा आवश्यक दक्ष जनशक्ति उपलब्ध, परिचालन र उपयोग भएको हुनेछ ।

UNIT 5 POLITICAL DEVELOPMENT AND GOVERNANCE IN NEPAL

Democracy

U.S. president Abraham Lincoln (1809-1865) defined democracy as:

Government of the people, by the people, for the people

Democracy is by far the most challenging form of government - both for politicians and for the people. The term democracy comes from the Greek language and means "rule by the (simple) people". The so-called "democracies" in classical antiquity (Athens and Rome) represent precursors of modern democracies. Like modern democracy, they were created as a reaction to a concentration and abuse of power by the rulers. Yet the theory of modern democracy was not formulated until the Age of Enlightenment (17th/18th centuries), when philosophers defined the essential elements of democracy: separation of powers, basic civil rights / human rights, religious liberty and separation of church and state.

Democracy - Classical Definition

Often democracy is defined opposite to other types of government: Monarchy: Government by a single ruler (king/queen, emperor) Aristocracy: Government by noblemen (hereditary)

Oligarchy: Government by few persons

Theocracy: "Government by God" (in reality this means government by religious leaders)

Dictatorship: Government by people, that have seized power by force (often: military dictatorship)

Today, the majority of democratic countries in the world are republics, i.e. officials are elected. Some well-established democratic countries in Europe, however, (the United Kingdom, Spain, Belgium, the Netherlands, Luxemburg and the Scandinavian countries) are constitutional monarchies, i.e. a king or queen is head of state while the constitution guarantees nevertheless all basic rights as in any democratic republic and sets clear limits to duties and competences of the monarch. Such a king can be regarded as a stabilizing factor rather than as a danger for a democracy. Therefore the classical definition of democracy is little helpful - at least concerning monarchy.

Democracy - Modern Definition

Because the definition of the term democracy opposite to monarchy and aristocracy rather creates confusion with regard to constitutional monarchies instead of establishing clarity, it is more appropriate to define democracy opposite to authoritarian and totalitarian regimes: Democracy: Government by a little group of leaders on the basis of an ideology, that claims general validity for all aspects of life and usually attempts to replace religion. The regime does not tolerate any deviation from its state ideology. Regime opponents are persecuted, tortured, detained in concentration camps and members of ethnic minorities are killed in mass executions (genocide).

Historic examples of totalitarian regimes include : National Socialism(Germany under Hitler, 1933-1945) and Stalinism.

Authoritarian regime:

Government by a little group of leaders. In contrast to totalitarian regimes, authoritarian regimes have no distinct state ideology and grant some amount of freedom (e.g. economic and cultural) as long as the rule is not jeopardized. The most important goal of authoritarian regimes is the maintenance of power and the personal enrichment on cost of the country and its population. Theocracy: "Government by God": in reality this means government by religious leaders. Usually a certain interpretation of ancient religious laws replaces modern forms of law and is enforced with utmost severity. Example: Islamic Republic of Iran.

Democracy - Key Elements

In order to deserve the label modern democracy, a country needs to fulfill some basic requirements - and they need not only be written down in its constitution but must be kept up in everyday life by politicians and authorities:

- Guarantee of basic Human Rights to every individual person vis-à-vis the state and its authorities as well as vis-à-vis any social groups (especially religious institutions) and vis-à-vis other persons.
- Separation of Powers between the institutions of the state: Government [Executive Power], Parliament [Legislative Power] und Courts of Law [Judicative Power]
- Freedom of opinion, speech, press and mass media
- Religious liberty
- General and equal right to vote (one person, one vote)
- Good Governance (focus on public interest and absence of corruption)

Churchill on democracy

No one pretends that democracy is perfect or all-wise. Indeed, it has been said that democracy is the worst form of government except all those other forms that have been tried from time to time.

This famous quote attributed to the former British prime minister Sir Winston Churchill (1874-1965) focuses right on the weak spot of democracy:

There is no such thing as the "perfect form of government" on earth, but any other form of government produces even less desirable results than democracy. Until today, no other form of government has been invented that could regulate public affairs better than democracy.